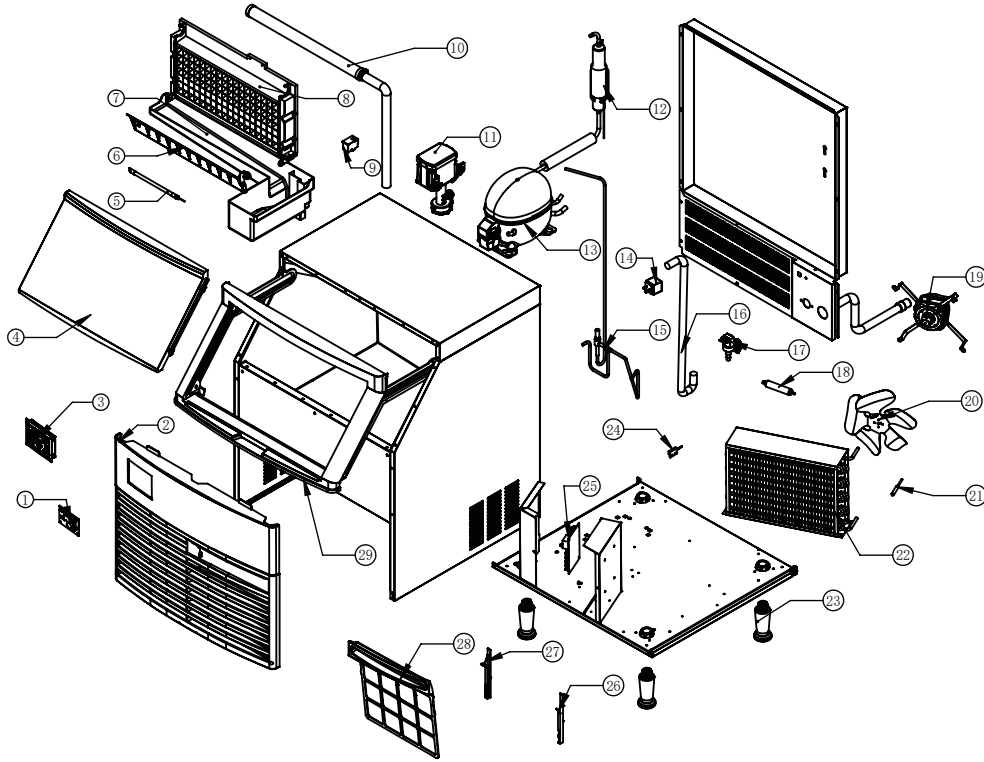


# Exploded view

# SK-210P (220V/50HZ&60HZ/R290)



Ref	Part No.	Name	Specification
1	08.0.0109-04	Display Board	PD-321B
2	04.0.0014-03	Front Ventilation Window	160/210/280
3	54.0.0085-00	Control Panel Assembly	
4	04.2.0072-00	Blow Molded Door	PE 5502
5	08.6.0027-00	Cold Light 150MM	
6	04.0.0045-00	Skateboard	M1071
7	04.0.0027-00	Water Sink	M5002
8	06.3.0006-01	Evaporator	5 Rows * 18 Columns
9	08.1.0106-00	Ice Full Sensor	1390MM
10	51.1.0005-00	Spray Pipe Assembly	18 Columns
11	55.0.0012-00	Water Pump Assembly	220V / 50HZ-60HZ
12	51.0.0369-00	Return Air Pipe Assembly -219	R290
13	06.2.0217-00	Compressor NPY12RA	220V/50HZ R290
14	06.4.0043-00	Defrost Valve Coil	220~240VAC 50/60HZ 6A 1100MM
15	51.0.0368-00	Exhaust Pipe Assembly -219	R290
16	03.0.0033-00	Silicone Hose	White, φ14*φ9.5
17	06.6.0038-00	Water Inlet Valve	220V 50/60HZ 2.6L/MIN.
18	06.5.0069-00	Filter Dryer	φ19*110*ID3.0*ID6.35/10g
19	06.1.0020-00	Fan Motor	
20	06.1.0031-00	Fan Blade	φ230 28°
21	08.1.0025-00	Condensation Sensor	1000MM
22	06.0.0003-00	Condenser	Air-Cooled 200A
23	52.0.0040-00	Feet Assembly	
24	08.1.0035-00	LED Light Magnetic Switch	1400MM
25	08.0.0142-01	PC Board	PC-446
26	04.0.0189-00	Filter Right Slot	
27	04.0.0188-00	Filter Left Slot	
28	04.0.0016-03	Ventilated Window Filter	
29	52.0.0002-03	Door Frame Assembly	160/210/280